

## Frequently Asked Questions Ctd

### Q: Are we insured?

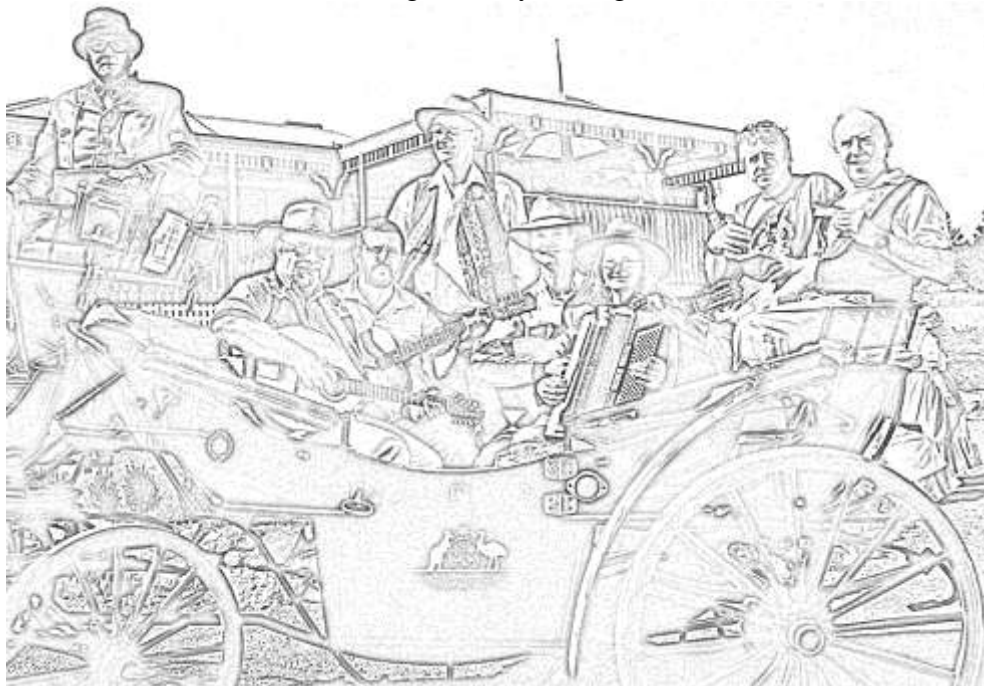
A: Yes. The Bush Dancers Display Group is an activity of the Monaro Folk Society Inc.(MFS) and is run by a sub-committee appointed by the main MFS committee. One of the conditions laid down by the main committee is that only MFS members may join The Bush Dancers Display Group, although of course members of the public are usually invited to join in some of the dancing on the day. The Bush Dancers Display Group sub-committee consists of Barbara & Lance Court (Primary Contacts) and Dianna & Daryl Powell (Alternate Contacts). A copy of the MFS Certificate of Insurance that covers The Bush Dancers Display Group is available from Lance Court.

### Contact Us

Primary Contacts: Barbara & Lance Court 6161 2426, LCourt@pcug.org.au

Web site: <http://dance.pcug.org.au/>

Music Co-ordinators: Bob Hodgson, Ray Mulligan



## Welcome to The Bush Dancers display group

The aim of The Bush Dancers display group is to promote bush dancing and Australian traditional music.

### The 45 Minute Program

#### Before the Performance

Make sure you know the set formations (Dashing White Sergeant for example can be done as “spokes of a wheel”, column with tops’ backs to the band, or column across with tops on the band’s left).

#### Bracket 1

Form up as couples in a column off stage ready for march on. Note who is man #1 and whether you are an odd or even couple.

Spare people can swap dancing gender if they are comfortable doing this, or march on then retire to the side. At the end of each transition, if you are on the side please tag in, if you have just danced please offer your place gracefully.

The performance starts with (1) music to attract attention, (2) intro by announcer, (3) March-on music. March on and into a big circle, evening up the spacing between couples. When the music stops, odd couples (#1, #3 etc) turn as a couple to face even couples.

1.1) Margaret's Waltz; 32 bar Margaret's Waltz; Sicilian Progressive  
Then: Stay in groups of 2 couples, form up Double Sicilian Progressive starting from top of column (eg 2 couples in a line with backs to band, 2 couples face them, etc).

1.2) Chain Double Quadrille; 48 bar reel; Double Sicilian Progressive

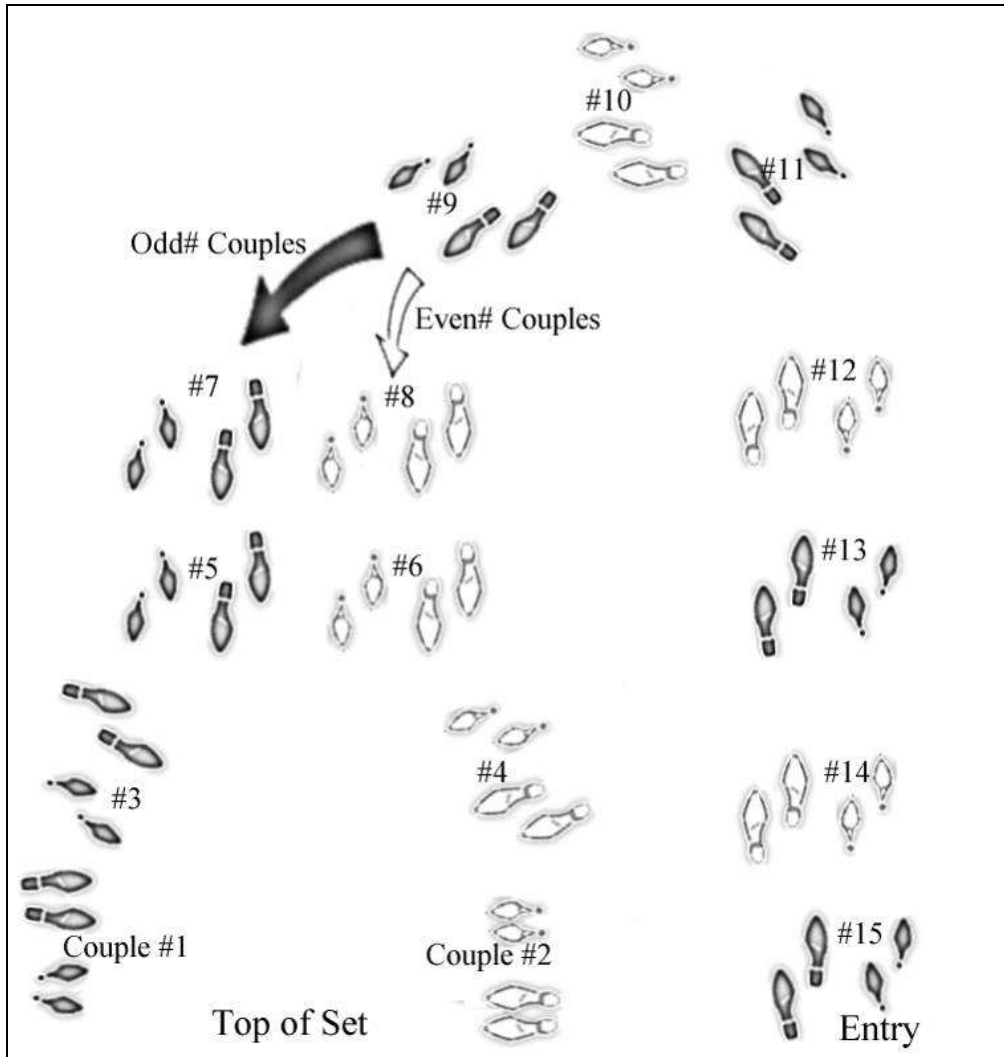
1.3) Tivoli Galop Quadrille; 48 bar Can Can Theme; 4 Couples Square Set  
Final promenade into big circle of couples.

1.4) Circle Waltz; 32 bar waltz; circle

Then: If audience join-in is announced, repeat with join-in. At end of dance, pause for applause and band to change music, then march off with your current partner. Man #1 leads the column off the floor. Announcement of musical interlude.

## Bracket 2

Bracket 2 starts with music and announcement, followed by march-on music. March on as couples until at the foot of the set, make lines of 4 and march towards the top, then bend into couple facing couple across the set. Start new sets as necessary.



## Q: Do The Bush Dancers display group always do the same dances?

A: As far as is possible.

Like the Rolling Stones, we rehearse and perform the same act to many different audiences. There the similarity ends, although some of us are in the same age bracket.

Our goal is to perfect an act and then perform it as many times and as well as is possible. We may change the act to improve its impact, or to fit in with an event theme, but not change for the sake of change. No event organiser or audience member has ever complained that they have already seen our act.

We have a body of dancers that are very well rehearsed, and this makes it easy for newcomers to join in. It's easy to dance when surrounded by folk who know the dances well. Similarly, most of the dancers don't need much rehearsal, but are happy to join in rehearsals to help newcomers.

Our aim is to attract attention through live music, colour and movement, to project our enjoyment from the stage, and to encourage members of the public to join in bush dancing. Having a fixed program allows us to concentrate on these aspects of our performance and, rather than spending time changing our routine, spend our time improving the impact of our act.

## Q: What is our relationship to other groups?

A: We report to the Monaro Folk Society (MFS) by way of an annual report.

We don't accept performances that would clash with MFS bush dances. Our aim is to promote bush dancing so we don't want to take away from bush dance numbers.

There are a lot of other dance and MFS activities. We try to avoid clashes, but where we cannot we are guided by the responses from performers as to whether to accept a booking.

There are many other display groups, and a number of our performers also belong to other groups. We are interested in the activities of these other groups, and have many friends in them. We also respect the other groups because we know the extraordinary effort that all groups put into rehearsal and performance. We don't know the plans of other groups, and do not attempt to co-ordinate our activities. Like all groups, we simply express interest to event organisers and let them schedule the performances. Similarly, we leave it up to performers to decide which group they will perform with if clashes of performance occur.

The concept of the "massed display" is an excellent one for drawing an audience and demonstrating the joy and accessibility of bush dancing. We encourage members of other groups to join with us in our displays.

**Q: What do I wear?**

A: The most suitable costume that you have or can obtain for the particular performance. We aim to deliver colour and movement to attract the interest of audiences that are not familiar with bush dancing, and to project our enjoyment from the stage. The purpose of our costumes is to attract audience attention and to give us stage presence. But, The Bush Dancers Display Group is first and foremost accessible and we are not trying to depict any particular era or costume style.

Options include starting with the minimum dress of long skirt and frilly or period-style blouse, or dark trousers, white shirt and waistcoat, or borrowing more formal dress from someone your size. Many of our existing dancers are happy to lend costumes to get you going and you will soon see the costume opportunities that are open to you.

Outdoor performance dress is daytime colonial or costume such as you might wear to the Shearers Ball. For indoor and stage performances, please wear your evening ball attire if you have it, but don't be daunted if you haven't - the minimum dress of long skirt and frilly or period-style blouse, or dark trousers, white shirt and waistcoat will usually be fine.

Runners and jeans would not look right in our outdoor stage or indoor performances, and you are better off with shoes with some slide (eg leather soles).

**Q: Do I need to RSVP?**

A: Yes please. We need indicative numbers sufficient for us to confirm the event with our hosts. We will confirm when we can form five couples, and we have contingency plans for the unlikely event that we only have three couples turning up on the day. We have never had numbers low enough to cause any doubt, but it would be a pity if we declined an event when there were people intending to participate that hadn't let us know. It is good for everyone to have an indication of our numbers and gender balance, and comforts the organisers.

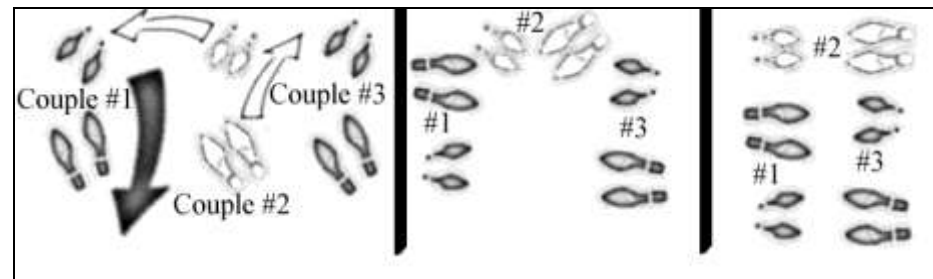
**Q: How do I join the musicians?**

A: Please contact [LCourt@pcug.org.au](mailto:LCourt@pcug.org.au) to be added to The Bush Dancers mailing list, and then contact the Musician Co-ordinator shown in the upcoming events E-Mail. If you are a musician, please ignore Lance's calls for expressions of interest from dancers and stay in touch with the Musician Co-ordinator instead. If you don't have E-Mail, please keep in touch with Bob Hodgson and Ray Mulligan, our Musician Co-ordinators.

2.1) La Galopade; 4x32 bar Reel; 8 couples in lines of 4

2.2) Maxina; 24 bar 4/4-time Maxina;

Then, at end of Maxina, couple #1 turn as a couple & welcome Woman #2, couple #2 split, couple #3 stay & welcome Man #2. Couple #4,5,6 repeat, etc. Move into position as 3 facing 3.



2.3) Dashing White Sergeant; 32 bar scottish polka or reel; 3 facing 3;

Then: Move to big circle as couples, woman on man's right.

2.4) Circassian Circle - Part 2 32 Bar Jig; Circle;

Then: If audience join-in is announced, repeat with join-in. At end of dance, pause for applause and band to change music, then farewell march off with your current partner. Man #1 leads the column off the floor. Final Announcement.



## The Bush Dancers 45 Min Program Prompt Sheet

The following list is highly abbreviated to be used as a prompt sheet to refresh your memory once you know the dance.

### Bracket 1

#### 1.1) Margaret's Waltz; 32 bar Margaret's Waltz; Sicilian Progressive

AR2; RH turn Opp; LH turn partner; HLC; chaszez diagonally R; chaszez L; turn to RHS to original places; DoSiDo R Opp; waltz on.

#### 1.2) Chain Double Quadrille; 48 bar reel; Double Sicilian Progressive

Centre 4 RHS; L arm turn P 1&1/2 times; new centre 4 RHS; L arm turn P 1 1/2 to place; set P x2; XH swing; LC around square starting across; AR4; Thru , men L shoulder.

#### 1.3) Tivoli Galop Quadrille; 48 bar Can Can Theme; 4 couple Square Set

Ts GIO4 & across, Rpt BTP, All SLC, GCr & Prom BTP. Rpt with Ss Solo. Rpt with Ts lead. Rpt with Ss lead.

#### 1.4) Circle Waltz; 32 bar waltz; circle

Bal F&B, pass W across x4. Sway in&out, turn single in, Sway out&in, turn single out, Chaszez in&out, waltz

### Bracket 2

#### 2.1) La Galopade; 4x32 bar Reel; Couple facing couple across set

Waltz hold AR, Adv& W swap, rpt back to place, LC, Top of W Line gallop to B

#### 2.2) Maxina; 24 bar 4/4-time Maxina;

Couples UProm L Rock x2; 3 Fwd, Raise R; 3 back raise L; 2 Fwd, turn, 3 back LD, raise L; 2 Fwd, turn, 3 back ALD, raise R; 4 grapevine; 2 fwd cross L over R, 3 back; Rpt; 2 Fwd; turn Wout, waltz.

#### 2.3) Dashing White Sergeant; 32 bar scottish polka or reel; 3 facing 3;

CL; CR; Set&turn R; Set&turn L; RO3; AR4; Thru;

#### 2.4) Circassian Circle - Part 2 32 Bar Jig; Circle;

AR4 x2, W AR4, M AR4, XH Swing Cnr, Sk Prom Cnr

### Abbreviations

ACW	Anticlockwise	NH	Holding Nearer Hand
ALD	Against the line of dance (CW)	OH	Two hand open hold
AR	Advance & Retire	Opp	Opposite
ARx	Advance & retire, x steps each way	OS	Over Shoulder Hold
B	Bottom	P	Partner
Bal	Balance	Prom	Promenade
BR	Ballroom hold	R	Right
BTP	Back To Place	R&L	Rights & Lefts (with hands)
CL	Circle left	R Cross	Change places with partner, passing right shoulders
CR	Circle Right	RH	Right Hand
Cnr	Corner	RHS	Right Hand Star
Ctr	Centre	ROx	Reel Of x (3 or 4)
CW	Clockwise	Rpt	Repeat
DoSiDo L/R	Do-si-do by left/right shoulder	S	Side; Ss Sides
Fwd	Forward	SC	Side Couple
F&B	Forward & Back	Sk	Skaters Hold
GCr	Grand Cross - W RH in	SLC	Star Ladies Chain with each man
GIOx	Galop In&Out, x steps each way	T	Top; Ts Tops
HLC	Half Ladies Chain	TC	Top Couple
L	Left	Thru	Advance & pass through
LC	Ladies chain	UProm	Upper promenade hold
LD	Along the line of dance (ACW)	W	Women
LH	Left Hand	W2	Woman 2 etc
LHS	Left Hand Star	x2	twice etc
M	Men	XH	Cross-hand hold
M2	Man 2 etc		

## Frequently Asked Questions

### Q: How do I join the display group?

A: Any member of the Monaro Folk Society Inc.(MFS) may join The Bush Dancers Display Group. All you need is the minimum dress of long skirt and frilly or period-style blouse, or dark trousers, white shirt and waistcoat, and ability to do at least one of the dances without calling but in the company of many others who know the dances and can help newcomers through them if necessary. You will quickly find that practice makes perfect.

### Q: Do I need to come with a partner?

A: No. We do not form up sets until the day. This means that if you find you cannot come on the day, you shouldn't feel that you will be letting the side down, our numbers are not that finely tuned. It also means that if you unexpectedly find that you can participate on the day, then please don your costume and join us.

However, this means that we do not know until the day precisely what our gender balance will be. All we have is indicative numbers sufficient for us to confirm the event with our hosts.

If you find yourself in the majority, and are comfortable dancing as the opposite gender, then please do so. Please also keep an eye out for dancers who have to stand out during a dance and swap with them to share the dancing around. It goes without saying that everyone who turns up should get an adequate opportunity to dance.

There is no pre-planning of the forming of sets, please take partners and form sets on the day. If you do have a dancing partner it is quite ok to start the bracket with them, but please then swap if necessary and if you are both comfortable doing so.

